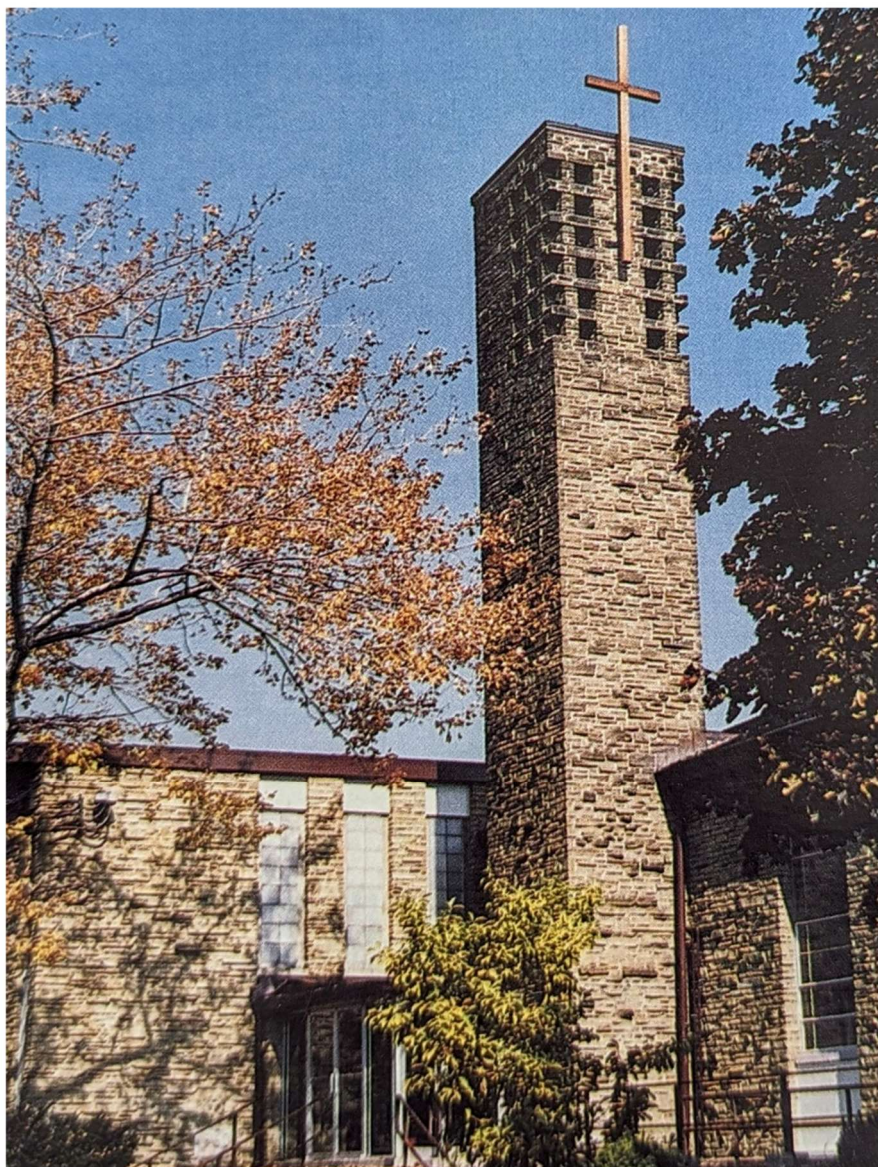


# Bethlehem Evangelical Lutheran Church

*... Your Neighbor in the  
Lansing Community.*



# Bethlehem

Lutheran Church Lansing

549 E. Mt. Hope Ave.  
Lansing, MI 48910  
517-482-3225  
[www.bethlutheran.org](http://www.bethlutheran.org)

Worship Service – 10:00  
April 14, 2024



**Evangelical Lutheran  
Church in America**  
God's work. Our hands.

## PRAYER BEFORE WORSHIP

*Father God, you sent Jesus the Christ to show us the way, the truth, and the life. When our trust falters, you offer the example of Jesus' works, his words, and his life. In this time of worship, O God, send us your comfort and quiet assurance; give us strength and courage to live faithfully as your people. In Jesus name we pray. Amen.*

## WELCOME

We count it a privilege to receive guests into our worship service. The ministry of Bethlehem Lutheran Church exists to bring glory to God and to serve you. We hope you sense that Jesus is at the heart of all we do.

If you are a guest, and would like more information about our ministries, please send Pastor Matt Smith a message at [pastormattsmith@gmail.com](mailto:pastormattsmith@gmail.com) or call the church office at 482-3225.

## PRAYER REQUESTS

Bethlehem Lutheran is a praying church; this is one of our Faith Practices/Marks of Discipleship. A white card is provided in the pew rack for requesting petitions of concern or thanksgiving to be included in the prayers of the congregation. Fill out the card and hand it to an usher during the Hymn of the Day. If you would like the person named on the card notified about the prayer offered on their behalf, please include an address on the card.

If you would like your concern prayed for every day this week, please fill out a blue card, place it in the basket in our prayer corner, or hand it to an usher to bring forward.

*Silencing cell phones and handheld devices and keeping conversation to a minimum during worship is appreciated.*



# HOLY COMMUNION

*Setting Two*

Order of Worship\*

April 14, 2024

10:00 a.m.

WELCOME

PRELUDE: "Lift High the Cross"

Handbell Choir

(The Prelude provides you with a time of transition from the busy schedule and distractions of the world into the quiet of God's peace. You are invited to use this time for reflection and prayer.)

ANNOUNCEMENTS

## I. We Are Gathered in God's Presence

\*\*CALL TO WORSHIP

☩ *In the name of the Father, and of the Son, and of the Holy Spirit.*

☩ **Amen.**

*Let us call upon the name of the Lord,*

**For God hears us when we pray.**

*Let us place our trust in the Lord,*

**For God alone gives genuine joy.**

*The Lord gives peace to all who ask,*

**And makes glad the hearts of the people of God!**

OPENING HYMN: "Lift High the Cross"

Hymn #377 (LBW)

THE GREETING

☩ *The grace of our Lord Jesus Christ, the love of God, and the communion of the Holy Spirit be with you all.*

☩ **And also with you.**

\* Unless otherwise indicated, hymn numbers refer to hymns in the *Lutheran Book of Worship* (LBW).

\*\* those who are able are invited to stand

# THE HYMN OF PRAISE



A This is the feast of vic-to-ry for our God. Al-le-lu-ia.



B Wor-thy is Christ, the Lamb who was slain, whose blood set us



free to be peo-ple of God. Pow-er and rich-es and wis-dom and



strength, and hon-or and bless-ing and glo-ry are his.



This is the feast of vic-to-ry for our God. Al-le-lu-ia.



Sing with all the peo-ple of God and join in the



hymn of all cre-a-tion: Bless-ing and hon-or and glo-ry and



might be to God and the Lamb for-ev-er. A-men.



This is the feast of vic-to-ry for our God, for the Lamb who was slain



has be-gun his reign. Al-le-lu-ia. Al-le-lu-ia.

# THE SALUTATION AND PRAYER OF THE DAY

**P** *The Lord be with you.*

**G** **And also with you.**

*Let us pray. Heavenly Father, as the disciples, enshrouded in fear, trembled in the darkness of the upper room, so does this world dwell in darkness ... tremble in fear. Your Son brought the light of his presence, the bright joy of the resurrection, to the disciples, dispelling their fear, inspiring hope. Open, we pray, the doors of this upper room. Lead us out into the world. Then, glowing with the borrowed light of your Son, we will live the lives that we profess:*

**“The living Jesus is our Lord!”**

*Through the same Jesus Christ, your Son, our Lord. He lives and reigns with you and the Holy Spirit, one God, now ...*

**and forever. Amen.**

## II. We Encounter God through the Word

VIDEO PRESENTATION: “Lift High the Cross, 1974-1999”

THE FIRST READING Acts 3:12-19 (page 120 in the New Testament)

Peter and John healed a lame man at the Beautiful Gate of the temple. A crowd gathered and was amazed. Peter explained that it was faith in Jesus’ name that resulted in the healing. It was this Jesus whom they crucified but is now living. In spite of this, God is willing to forgive those who turn to him in repentance and faith.

(after the reading) **L** *The word of the Lord.*

**G** **Thanks be to God.**

\*\*GOSPEL VERSE

**G** Al - le - lu - ia. Lord, to whom shall we go?

You have the words of e - ter - nal life. Al - le - lu - ia.

THE GOSPEL

Luke 24:36b-48 (page 91 in New Testament)

In this resurrection appearance, Jesus opens the minds of the disciples to understand him as the Messiah. Jesus convinces the disciples that he has been raised, and sends them on a mission to proclaim the message of repentance and forgiveness.

**P** *The Holy Gospel according to Luke.*

**G** **Glory to you, O Lord.**

(after the reading) *The Gospel of the Lord.*

**Praise to you, O Christ.**

SERMON: “You Are Witnesses”

Rev. James A. Schalkhauser  
Rev. James R. Lichtenberger

**CONFESSION OF FAITH: The Nicene Creed**

**We believe in one God,  
the Father, the Almighty,  
maker of heaven and earth,  
of all that is, seen and unseen.  
We believe in one Lord, Jesus Christ,  
the only Son of God,  
eternally begotten of the Father,  
God from God, Light from Light,  
true God from true God,  
begotten, not made,  
of one Being with the Father.  
Through him all things were made.  
For us and for our salvation  
he came down from heaven;  
by the power of the Holy Spirit  
he became incarnate from the virgin Mary, and was made man.  
For our sake he was crucified under Pontius Pilate;  
he suffered death and was buried.  
On the third day he rose again  
in accordance with the Scriptures;  
he ascended into heaven  
and is seated at the right hand of the Father.  
He will come again in glory to judge the living and the dead,  
and his kingdom will have no end.  
We believe in the Holy Spirit, the Lord, the giver of life,  
who proceeds from the Father and the Son.  
With the Father and the Son he is worshiped and glorified.  
He has spoken through the prophets.  
We believe in one holy catholic and apostolic Church.  
We acknowledge one Baptism for the forgiveness of sins.  
We look for the resurrection of the dead,  
and the life of the world to come. Amen**

**THE PRAYERS**

**"Sanctuary"**

Lord, prepare me to be a sanctuary  
pure and holy, tried and true.  
With thanksgiving I'll be a living  
sanctuary for You.

1982 Whole Armor Publishing Company  
CCLI License No. 1146

(after each petition) *God of grace,*  
**☞ hear our prayer.**

**\*\*PASSING OF THE PEACE**

**P** *The peace of the Lord be with you always.*

**G** **And also with you.**

(Greet one another in joy and love: "Peace..." or "The Lord be with you!")

**GATHERING OF OFFERINGS**

**ANTHEM: "All Things"**

Senior Choir

**OFFERTORY RESPONSE** (*as the gifts are brought forward*)



**G** Let the vine-yards be fruit-ful, Lord, and fill to the brim our cup of



bles-sing. Gath-er a har-vest from the seeds that were sown, that we may be



fed with the bread of life. Gath-er the hopes and dreams of all; u -



nite them with the prayers we of - fer. Grace our ta - ble with your



pres - ence, and give us a fore - taste of the feast to come.

**OFFERTORY PRAYER**

**A** *Let us pray. Blessed are you,*

**G** **O Lord our God, maker of all things. Through your goodness you have blessed us with these gifts. With them we offer ourselves to your service and dedicate our lives to the care and redemption of all that you have made, for the sake of him who gave himself for us, Jesus Christ our Lord. Amen.**

# III. God Blesses Us in Holy Communion

## THE GREAT THANKSGIVING



Ⓟ The Lord be with you. ☒ And al - so with you.



Ⓟ Lift up your hearts. ☒ We lift them to the Lord.



Ⓟ Let us give thanks to the Lord our God.



☒ It is right to give him thanks and praise.

*It is indeed right and salutary that we should at all times and in all places offer thanks and praise to you, O Lord, holy Father, almighty and ever-living God. But chiefly we are bound to praise you for the glorious resurrection of our Lord; for he is the true Passover Lamb who gave himself to take away our sin, who by his death has destroyed death, and by his rising has brought us to eternal life. And so, with Mary Magdalene and Peter and all the witnesses of the resurrection, with earth and sea and all their creatures, and with angels and archangels, cherubim and seraphim, we praise your name and join their unending hymn:*



☒ Ho - ly, ho - ly, ho - ly Lord, Lord God of pow'r and might:



Heav'n and earth are full of your glo - ry.



Ho - san - na in the high - est. Bless - ed is he who comes



in the name of the Lord. Ho - san - na in the high - est.



# EUCCHARISTIC PRAYER III

## THE LORD'S PRAYER

### DISTRIBUTION OF THE SACRAMENT

Whether you receive Communion or not, all are welcome at God's table. As Lutherans we believe that the Body and Blood of Christ is truly present in the bread and cup for the forgiveness of our sins for all the baptized. Please fill out a communion registration card, found in the pew rack, and hand it to the usher as you come forward down the center aisle. *If you desire grape juice instead of wine, please pick up a **pre-filled cup from one of the trays**.* You may return to your seats using the side aisles, depositing your cups in the baskets.

All are welcome to come to the Lord's Table even if they do not commune. Simply have your arms folded across your chest to receive a blessing. **Our communion bread is entirely gluten-free.** Children may receive Holy Communion if they have completed a course of instruction about the meaning of the sacrament. Until that time, children are invited to come with their parents and receive a fish cracker, which symbolizes the inclusion of the child in God's love and grace.



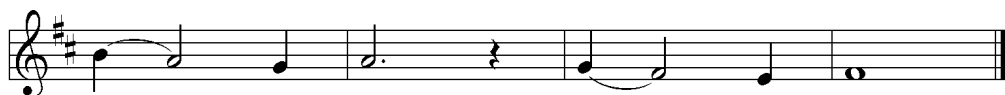
☞ Lamb of God, you take a-way the sin of the world; have mer-cy on us.



Lamb of God, you take a-way the sin of the world; have mer-cy on us.



Lamb of God, you take a-way the sin of the world;



grant us peace, grant us peace.

Hymns during the distribution: (All from Lutheran Book of Worship)  
Come, Let Us Eat #214, Thine Is the Glory #145,  
O Living Bread From Heaven #197, Let Us Break Bread Together #212

\*\* (after all have communed) ☞ *May the grace of our Lord Jesus Christ and the gifts of his body and blood strengthen, keep and unite us, now and forever.*

☞ Amen.

## POST-COMMUNION PRAYER

Ⓐ We give you thanks, almighty God, that you have refreshed us through the healing power of this gift of life; and we pray that in your mercy you would strengthen us through this gift, in faith toward you and fervent love toward one another; for the sake of Jesus Christ our Lord.

☞ Amen.

## IV. God Sends Us Forth to Serve

### BENEDICTION

Ⓐ *The Lord bless you and keep you.*

*The Lords' face shine on you with grace and mercy.*

*The Lord look upon you with favor and give you peace.*

*In the name of the Father, and of the + Son, and of the Holy Spirit.*

☞ Amen.

SENDING HYMN: "Sent Forth By God's Blessing" Hymn #221 (LBW)

### DISMISSAL

Ⓐ *Alleluia! Christ is risen.*

☞ **Christ is risen indeed. Alleluia!**

*You are the body of Christ raised up for the world.*

*Go in peace. Share the good news.*

**Thanks be to God!**

POSTLUDE: "Ein' feste Burg ist unser Gott"

*Max Reger*

## Mission Statement

### for Bethlehem Evangelical Lutheran Church

As children of God and disciples of Jesus Christ, empowered by the Holy Spirit, we are called to share God's Word, His love and saving grace by:

**worshipping** together

**inviting and welcoming** everyone

**studying** the Scriptures

**praying**

**servicing** the physical, emotional, and spiritual needs of each other, our community and the world.

Adopted May 7, 2000

# PARISH NOTES

## **TODAY WE CELEBRATE Bethlehem's 3<sup>rd</sup> Quarter in History!**

Enjoy special music and guest preachers, former pastors, Jim Schalkhauser and Jim Lichtenberger. Following the service, we will gather for a potluck reception in the fellowship hall. The entrée' will be furnished along with your table service.

**TODAY IS MISSION SUNDAY** Gifts received in a special mission offering will be given to the Lutheran Lakota Shared Ministry at the Pine Ridge Retreat Center in South Dakota. If you are viewing this bulletin electronically, click [HERE](#) to make your monetary contribution.

## **PINE RIDGE RECONCILIATION CENTER UPDATE** Thank

you for your support of this mission and ministry through your Mission Offering for youth ministry and job training at the center! Due to the increased use of the kitchen at the center because of the greater need for food, the floor was recently replaced. Six days per week, meals are prepared for the shelter as well as snacks for the recovery groups, Alcoholics and Narcotics Anonymous. That totals 150 meals a day.



You can find this and more information at the Reconciliation Center's Facebook page. For a more in-depth look at life on the reservation, be sure to check out Pastor Dan's blog at [DANINSOUTHDAKOTA.COM](http://DANINSOUTHDAKOTA.COM).

## **LUTHER LEAGUE CAN/BOTTLE FUNDRAISER FOR THE GATHERING**

We want your returnable cans and bottles! We are collecting cans and bottles throughout the month of April to help raise funds for our trip to New Orleans. When bringing in cans/bottles, please make sure they are in a closed plastic bag and placed under the stairs in the gym. We appreciate your support!

**LIVING LUTHERAN** This wonderful magazine is now available in digital form only. You can find it at:

<https://www.livinglutheran.org/edigest-signup/>

**MOBILE FOOD DISTRIBUTION** On Wednesday, April 10, from 1:30-3:00, more than 22 volunteers converged on our parking lot to distribute food for 200 households. Thank you for your ongoing support of our feeding ministries at Bethlehem! Join us on May 8 for our next distribution.

GREATER LANSING  
**foodbank**



**STONY LAKE REGISTRATION** Elementary, Confirmation and Senior High Camp is Week 4 of the camping season this year (July 7-12). Log on to <http://www.elcalivingwater.com/> and complete your camp registration.

**FLOWER CHART** Thank you to all who sponsor the flowers for Bethlehem's Worship on Sunday Mornings. The beautiful arrangements enhance the worship experience for all. The 2024 Flower Chart is now posted. Many like to commemorate a special person, date or event with altar flowers. If you have a special date in mind, sign up to save that Sunday. The cost for each arrangement is \$40. The flower order is submitted one month at a time so please sign up by the 15<sup>th</sup> of the month for the flowers to be ordered for the next month. Payment may be made in advance or on the Sunday for which the flowers are ordered. Checks should be made payable to Kris Burow.

**COMMUNION** Please fill out a communion card from the pew rack before you come forward to receive communion. Keeping track of who has attended worship will allow us to provide better pastoral care for our members. Our Communion Bread in worship is gluten free. Now, everyone in our congregation will receive the Body of Christ from the ***same*** loaf.

## THOUGHT FOR THE WEEK

*Today's bulletin cover is the cover of a 1980s brochure for Bethlehem that outlined God's mission and ministry to the Lansing community through our witness.*

### **ATTENDANCE**

Worship Attendance: 75 in-person, 42 people viewed the 4/7/24 Live worship and the recorded service on YouTube.

**STEWARDSHIP REFLECTIONS** We live out Jesus' call to be his witnesses in our individual lives through our words and actions. The Holy Spirit weaves together this generosity and service into our congregation's 100-year witness to God's forever love in Christ. Thank you for all the ways you give, and you serve.

**SENSORY TOOL KIT** To assist parents of children with sensory issues (on the Autism Spectrum) in worship, we now have a Sensory Tool Kit on the coat rack in the Lobby. If you cannot locate it, please ask an usher.

**THRIVENT MEMBERS** You can designate your choice dollars to go to Bethlehem Lutheran Church.

### **THOSE SERVING IN WORSHIP NEXT SUNDAY**

GREETERS – David & Keitha Snider

USHERS – Ron Miller, David Westover

ACOLYTE – Sabrina Prowdley

COMMUNION ASSISTANTS – Keitha Snider, Sherry Bass-Pohl

LAY READER – Don Telles

ALTAR GUILD – Carrie Rice, Dorothy Martin

Our Thoughts &  
Prayers  
are with...

**REMEMBER IN YOUR PRAYERS** and with your cards and visits:

*John Nelson* in Grand Haven Living Center-Senior Care in Lansing

*Rhoda Hunter* in Prestige Way on Keller Road in Holt

*Marilyn Bass-Huyser* in Independence Village, Grand Ledge

*Betty Strother* in Independence Village, East Lansing

*Joe & Audrey Skidmore*, in Assisted Living, Sedona, AZ

*Kurt Kollmeyer*, Addie's Acres, DeWitt

*Michael Mahoney*, in Mary Free Bed, Lansing

**Those at home:** *Kaye Alden, John Bartel, Virginia Bauman*

*Tosha Brisbo, Crystal Collins, Joann Dyer, Keith Ferguson*

*Emma Hicks, Nancy Jackson, Mike (Ferris) Kosloski, Linda McClellan*

*Yvonne Nelson, Tharin Palmer, Sandy Rollis, Carol Roush*

*Connie Scott, Betty VanConant, Cheryl VanPatten, Matthew White*

*If you know of a member you would like us to include on this list or remove from this list, please call the church office.*

**MISSION PARTNERS** Pray for the people and ministry at Pine Ridge Reservation in South Dakota. Pray for the Baker Neighborhood Partners and our LPD Community Police Officer, D.J. Rudd, Interim.

**THOSE WHO SERVE** Please pray for those who are on active duty in the United States Military Services:

**Chris Browne** – U.S. Air Force (Member of the Kern family)

**Tyler Barnes** – U.S. Marines (Candy & Cloyd Barnes' nephew)

**Isaiah Castellanos** – U.S. Army (Margo Devine's Great. nephew)

**Andrew Devine** – U.S. Nat'l Guard (Margo Devine's nephew)

**Carson Kosloski** – U.S. Marines (Jeff Kosloski's great nephew)

**Joshua Kosloski** – U.S. Army (Laura Halbakken's cousin)

**Rusty Landry** – U.S. Air Nat'l Guard (Don & Audrey Olson's grandson)

**Christopher Morgan** – U.S. Marines (friend of The Darling family)

**Ben Painter** – U.S. Air Force (Laura Halbakken's cousin)

**Ryan Schiffner** – U.S. Air Force (Rick & Jean Peckham's nephew)

**Dayton Tucker** – U.S. Marines (Friend of the Devine family)

**THRIVENT MEMBERS** You can designate your choice dollars to go to Bethlehem Lutheran Church. Thank you!

### **Lift High the Cross: 1974-1999**

The third 25 years at Bethlehem Evangelical Lutheran Church, from 1974-1999, began with the Pastor's Schalkhauser - Jim and Rusty - leading the congregation. Bethlehem's mission was to actively serve as witnesses of God's love by serving others. This was a time of great development of Outreach to our neighbors and our community.

Shortly after Pastor Rusty Schalkhauser and his wife Elsie joined in 1974, Elsie became instrumental in opening a food pantry within Bethlehem to serve the surrounding community. As our pantry grew, we eventually began partnering with the Greater Lansing Food Bank.

After the retirement of Pastor Rusty in 1980, Pastor Noel Niemann joined as an assistant pastor. Pastor Neimann was fundamental in bringing the Family Growth Center to Bethlehem before his departure in 1985. A division of Child and Family Charities, the Family Growth Center and Resource Center has used rooms in the lower level of the church since 1985 to give parents the tools they need through education so they can better nurture and care for their children to prevent the cycle of child abuse.



In 1986, Bethlehem welcomed Pastor Jim Lichtenberger as the Assistant Pastor, which was later changed to Associate pastor. Pastor Jim L. as he became known, worked with the Boards of Parish Education and Congregational Life and Activities. He was also in charge of Luther League, leading trips to ELCA National Youth Gatherings every three years.

As part of this position, in 1990, he attended a conference in Miami where he learned about a different way to teach the lessons of the Bible to neighborhood and church children. Using half of a \$2,000 grant, which we shared with Grace Lutheran Church in Lansing, Pastor Jim L. established a summer Day Camp at Bethlehem. This

weeklong program changed the way summer Bible school was taught by having kids learn through activities, skits, and stories. The importance of this model focused on having the leaders develop relationships with the kids in a communal environment.

## *Outreach in Action*

During our third 25 years, the congregation devoted itself to living out being witnesses by giving themselves to several important missions. The Congregation Council created the Board of Outreach out of Congregational Life and Activities, to better oversee these missions.

In 1975, around the fall of Saigon, Lutheran Social Services of Michigan (LSSM) contacted Pastor Jim S. for help in resettling a Vietnamese family in Lansing. This was part of a greater effort that other churches were already participating in. After a meeting the congregation decided to take on this task, not knowing that the family contained 13 adults and children. "The House", the former parsonage being used for youth activities, was converted to house the incoming family. Sandy Rollis agreed to head this huge undertaking of establishing the members of the Nguyen family. Once the Nguyen family saved up enough money to purchase their own home, the old parsonage was knocked down to expand the overflowing parking lot.

Also in the 1970s, Bethlehem began providing a mission for children in the neighborhood to come to the gym on a Wednesday night in the summertime and do activities while learning about Bible messages. This Neighborhood Kid's Night lasted for more than two decades. Not long after they began, organizers started providing dinner to the many neighborhood children who attended when they realized that the kids were arriving hungry. Additionally, so many 9 and 10-year-old kids were bringing along their toddler siblings that volunteers began walking them home afterward to make sure they remained safe.

In 1980, Bethlehem members Grace and Mark Munson decided to take Mark's new medical degree and become missionaries in Liberia. For almost two decades the members of Bethlehem continued to support them in their mission work by taking up regular special offerings to support them.

In the early 1990s, the Lansing Police Department approached Bethlehem to become a part of Neighbors United in Action (NUA). This partnership allowed the department to assign community policing officers to neighborhoods. Bethlehem began providing an office for the Baker-Donora neighborhood officer, deepening the church's relationship with its immediate community.

Beginning in 1992, Bethlehem joined a network of churches providing a Rotating Sanctuary for homeless families that lasted about two years. Although Lansing had a shelter for women and for men, there was no shelter specifically dedicated to assisting women who had children. The program was created and run through Advent House, a place of hope dedicated to helping people out of poverty and homelessness. Bethlehem was one of the first churches to commit. The Rotating Sanctuary would last for one week where between 20-30 women and children would come in the afternoon, spend the night, and leave in the morning. Our volunteers provided dinner and breakfast and gave them sack lunches to take with them. Bethlehem purchased and installed a washer and dryer in an upper locker room so they had a place to do laundry. It took 20-25



volunteers each time to make this happen, including two people each night who would stay up all night at the church with them every night. Bethlehem volunteers provided meals, setup and cleanup, and support by playing games with the kids or just talking with the guests. Advent House provided the mattresses and linens and moved them to the next church sanctuary at the end of the week. Our members also built a living room area in the gym with a rug, tv, and comfy chairs to make it feel homier.

### *Studying the Bible*

Although smaller Bible studies had been enjoyed by some in the church, in 1978, the members of Bethlehem made a multi-year commitment to the Bethel Bible series out of Madison, Wisconsin. Pastor Jim S. went there for two weeks of training and then spent the next two years training 16-18 member volunteers to become leaders of this in-depth Bible study covering the most important events of the Old Testament and the New.

In the 1970s, teens who were studying and working toward their confirmation began attending Confirmation Camp at Pleasant Hills and eventually Stony Lake Lutheran Camps. Additionally, the process of how the lessons leading up to confirmation were being taught drastically changed in the fall of 1997. Confirmation class became TNT – Tuesday Night Thriller – a whole new approach to instructing teens. TNT students learn through activities, videos, interactive lessons, and service projects, all led by adult volunteer guides. The pastors continued to teach the Bible lesson time with the youth. Bethlehem’s teens still participate in the TNT program for their confirmation preparation.

The women of the church were also very active in Bible study. Bethlehem had five Circles, or groups of women, all dedicated to Bible study and mission work. These Circles (Faith, Patience, Harmony, Friendship, and Rainbow) met once a month at different times on different days, to provide an opportunity for all the church women to be able to attend a Bible study that fit into their schedule.

### *Oh, What Fun*

In the early 1970s, Bethlehem had a parsonage on Ray Street adjacent to the church that was no longer being lived in. The Council agreed to allowing the youth to make it a place of gathering and activities. They cleaned it up and painted rooms their own unique colors. “The House” as it was called was a place to play cards, table tennis, bumper pool, and arts and crafts. All neighborhood kids were welcome to hang out and meet on Wednesday afternoons.

In the summer of 1977, there were so many families at Bethlehem that decided to go camping together, and Family Camp was born. More than 100 members would go to Pleasant Hill Camp, and later Little Pine Island Camp to do just that – camp. Many would stay for the whole week, and some would come for the weekend. During that week together, the Bethlehem family would have a great time bonding while adding Bible studies, devotions at night, and a worship service Sunday morning to their vacation.

The basketball court in the gym was heavily used by the community throughout the 1980s and 1990s. For more than two decades, Bethlehem hosted teams from small pee wees through high school ages, with members volunteering to be coaches. The organized basketball program began in cooperation with the YMCA with Chuck Proper. Both kid members and neighborhood boys and girls played on these teams that competed in leagues across the city. Eventually Cloyd Barnes took over when the "Y" dropped off. Bethlehem hosted the Juniors Basketball league on Saturday mornings from 8 or 9 until noon and even created a basketball tournament. "For the Lord" was a Gus Macker style tournament for all aged kids that raised money for Habitat for Humanity. And pickup basketball was held during much of the school year on Sunday evenings at 9 pm.

### *Music Additions*

In 1984, the family of a deceased young member Nancy Cooper, purchased a set of hand bells for the church in her memoriam. These new bells allowed musical members to participate in a newly formed Bell Choir. That year, Marty Killila became the first bell choir director. He directed the confirmation class, as part of their ceremony, in playing "Children of the Heavenly Father". The bell choir added new octaves of bells throughout the years.

In the 1990s, Bethlehem member Steve Roznowski created a music group that would play "special music" occasionally in the front pews of the church. The members, Steve and Melinda Roznowski, Ray and Vicki Cummings, and Laurey Wyble, would set up sound equipment and sing contemporary music with beautiful harmonies throughout the selected service. Dubbed Zamar by Pastor Jim S., Zamar is a Hebrew word that means "to make music in praise of God".

### *Expansion*

In 1989, the Board of Stewardship and Finance, along with the help of the Boards in the congregation, began a "long-range needs assessment." In the spring of 1991, a more intensive Church and Community Study was launched. It was completed in the fall of 1991, and recommendations were brought to the Church Council and, eventually, to the congregation. At a congregation meeting in November of 1992, approval was given to obtain a Consultant/Architect to review Bethlehem's studies and develop a proposal for improving the facilities. A Building Planning Committee was formed to choose an architect and develop a building plan. Buehrer Group Architecture & Engineering from Maumee, Ohio, was chosen to do the architectural planning. The process continued through 1993, and in February of that year the congregation approved a plan for new construction and renovation of the existing facilities. A Building Committee was formed, and on September 25, 1994, a ground-breaking ceremony took place. K & D General Contractors, Inc. in Williamston, Michigan, was awarded the general contract. Actual construction and renovation began in early June of 1995 and was essentially completed in February of 1996.

# WELCOME TO WORSHIP

**FLOWERS ON THE ALTAR** The Altar flowers are given to the Glory of God by Don Telles, in memory of Jan Telles.

**TAKING FAITH HOME** Find a copy on Facebook in the BELC Worship Group (<https://www.facebook.com/groups/belcworship/>).

**PORTALS OF PRAYER** April - June booklets are available on the Welcome Table in the lobby. If you would like a copy, call the church office, 482-3225, and we will send you one.

**PRAYER PARTNERS** Each Sunday we pray for a congregation in the North/West Lower Michigan Synod to offer our support and to emphasize the ministry that we share. This week we pray for Harbor of Grace Lutheran Church in Muskegon Michigan, Rev. Jake Ferra.

**ONLINE GIVING** Did you know that you can contribute via our website and not create an account? Clicking on the online giving link and filling out the donation form is all you need to do to make an online contribution. If you would like to create an account, go to the 'Printables' page on the BELC website for instructions. **Scan this QR Code by putting your cell phone camera up to the code and follow the link to give electronically to Bethlehem.**



## **THOSE WHO SERVE IN OUR WORSHIP**

PASTORS – Rev. Matthew A. Smith, Rev. John W. Burow

ORGANIST & HANDBELL DIRECTOR – James Schippers

CHOIR DIRECTOR – Sue Nelson

CONTEMPORARY WORSHIP DIRECTOR – Laurey Wyble

ASSISTING MINISTER – Susan Mahoney

ACOLYTES – Faith & Annabel Halbakken

LAY READER – Nancy Holderread

COMMUNION ASSISTANTS – Kris Burow, Mila Thompson

GREETERS – Jim & Liisa Whitman

USHERS – Phil Hassler

ALTAR GUILD – Kris & John Burow, Cheryl Thompson

A/V PRODUCTION – David Holderread, Jon Holderread, Kevin Meeker, Kevin Peckham, David Westover

## THIS WEEK AT BETHLEHEM LUTHERAN CHURCH

<b>SUNDAY, Apr. 14</b>	<b>8:45a</b>	<b>Children's Sunday School</b>
<i>Third Centennial</i>	<b>9:00a</b>	<b>Adult Forum</b>
<i>Celebration</i>	<b>10:00a</b>	<b>Worship – Holy Communion</b>
	<b>11:30a</b>	<b>Meal</b>
MONDAY	8:00a	Family Growth Center
	6:30p	Friendship Circle
TUESDAY	8:00a	Family Growth Center
	9:30a	Staff Meeting
	1:00p	Rainbow Circle
	6:30p	Handbell Choir
	7:30p	Senior Choir
WEDNESDAY	8:00a	Family Growth Center
THURSDAY	8:00a	Family Growth Center
	6:15p	T.N.T.
	6:30p	Congregation Council
FRIDAY	8:00a	Family Growth Center
	7:00p	Narcotics Anonymous
		Women's Retreat (19-21)
<b>SUNDAY, Apr. 21</b>	<b>8:45a</b>	<b>Children's Sunday School</b>
	<b>9:00a</b>	<b>Adult Forum</b>
	<b>10:00a</b>	<b>Worship – Holy Communion</b>

### **MARKS OF DISCIPLESHIP**

Jesus expects me to...

**PRAY** fervently,

**WORSHIP** faithfully,

**ENCOURAGE** one another,

**READ** the Scriptures daily,

**GIVE** freely of the gifts I have received from God,

**INVITE** others to know God,

**SERVE** all people,

*and, where I fall short of his expectations,*

*Jesus always offers me his love and forgiveness!*

**POWER GIFTS**